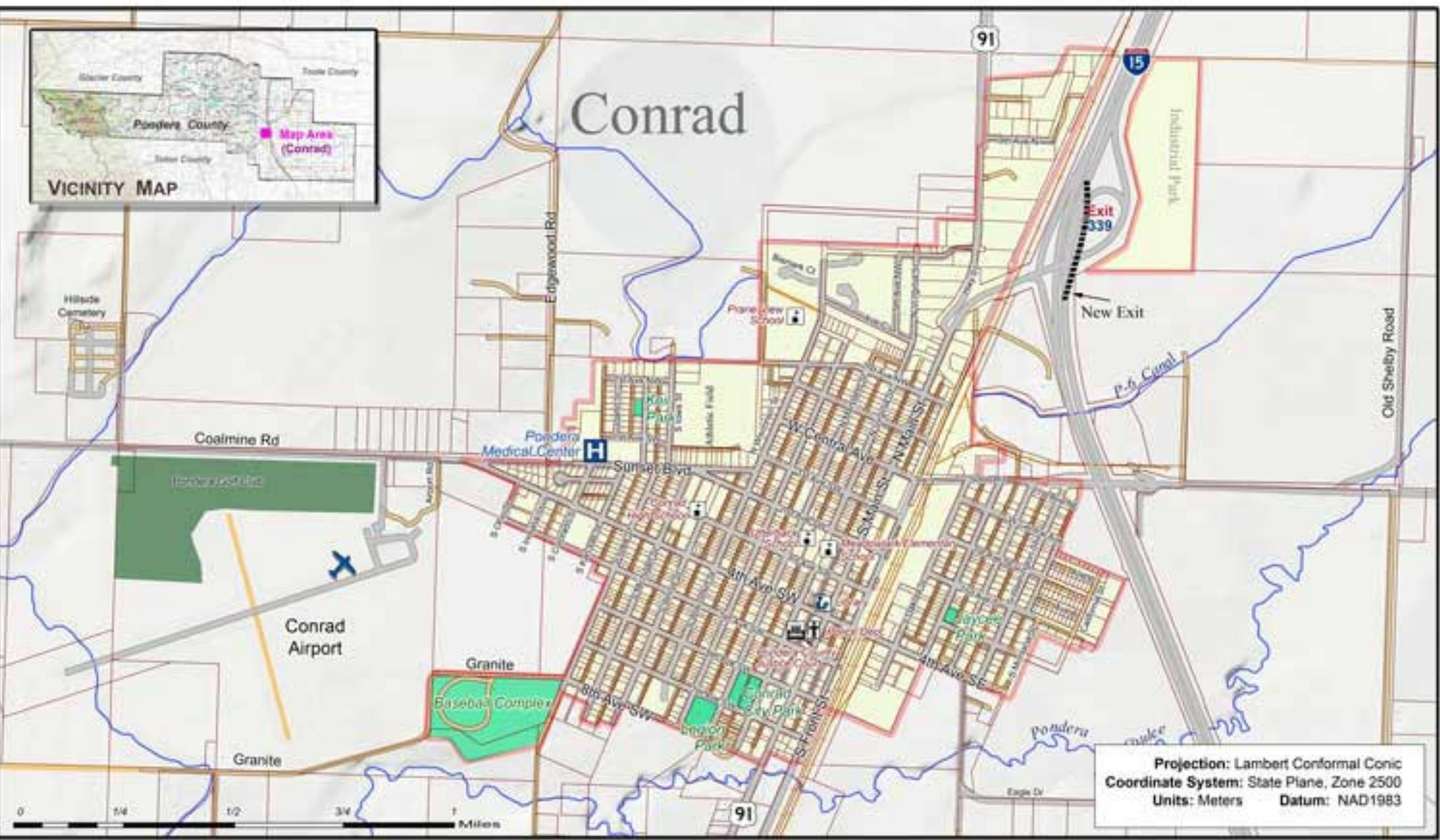




Conrad



Projection: Lambert Conformal Conic
 Coordinate System: State Plane, Zone 2500
 Units: Meters Datum: NAD1983

Conrad, Montana

Map 1

Conrad is a city in and the county seat of Pondera County, Montana. According to the United States Census Bureau, the city has a total area of 1.2 square miles (3.1 km²), all of it land. Conrad is located at: 48°10'22"N, 111°56'30"W.

Road information including surface type and names along with the municipal boundary, parks and locations of buildings provided by Pondera County E/911 Dept., and the City of Conrad.

This map was prepared September 2010 by Global Positions, LLC as part of the Pondera County Growth Policy Project.

MAP LEGEND

- Paved Road
- Gravel Road
- Dirt Surface
- Railroad
- Municipal Boundary
- Municipal Area
- School
- Hospital
- Police / Court House
- Library
- Park
- Surface Water / Ditch



-Magnetic Declination = 137° 44' E