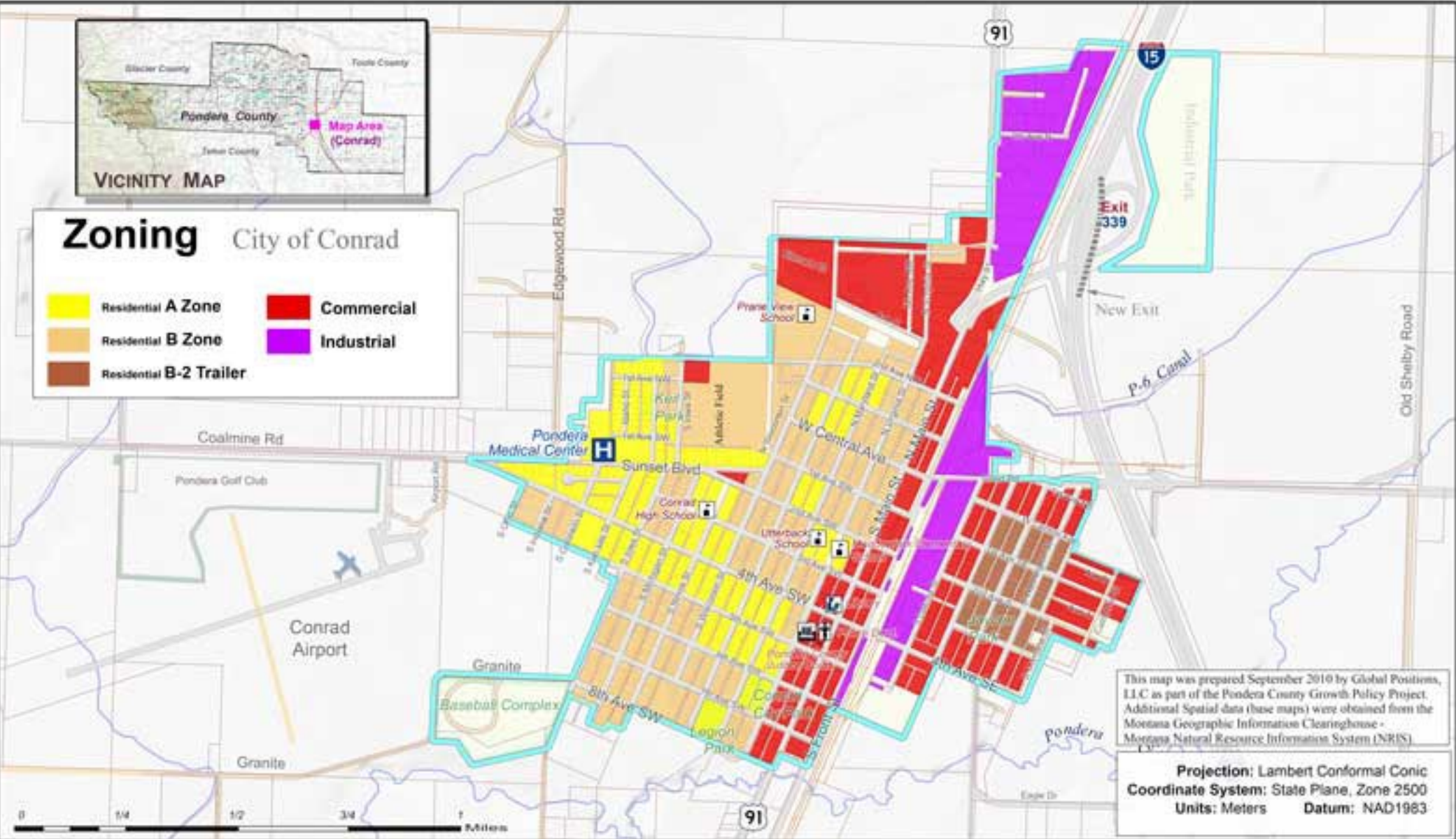




Zoning City of Conrad

- | | |
|--|--|
|  Residential A Zone |  Commercial |
|  Residential B Zone |  Industrial |
|  Residential B-2 Trailer | |



This map was prepared September 2010 by Global Positions, LLC as part of the Pondera County Growth Policy Project. Additional Spatial data (base maps) were obtained from the Montana Geographic Information Clearinghouse - Montana Natural Resource Information System (NRIS).

Projection: Lambert Conformal Conic
Coordinate System: State Plane, Zone 2500
Units: Meters **Datum:** NAD1983

Zoning Conrad, Montana Map 6

Zoning determines the size and use of buildings, where they are located and, in large measure, the densities of the city's diverse neighborhoods. This **Zoning Reference Map** provides only a brief overview of the zoning rules and regulations and is not meant to serve as a substitute for the actual regulations which are held by the City of Conrad. For background information on the development of the Official Zoning Map or to see the data used in the development of this map version of the Official Zoning Map, please visit with the City of Conrad.

Additional map information shown on this map including roads, surface type, road names the municipal boundary, parks and locations of buildings provided by Pondera County E-911 Dept. and the City of Conrad.

MAP LEGEND

- | | |
|---|---|
|  Paved Road |  School |
|  Gravel Road |  Hospital |
|  Dirt Surface |  Police / Court House |
|  Railroad |  Library |
|  Municipal Boundary* |  Surface Water / Ditch |

*Municipal Boundary is currently under review by the City of Conrad



September 2010



-Magnetic Declination = 13° 44' E