

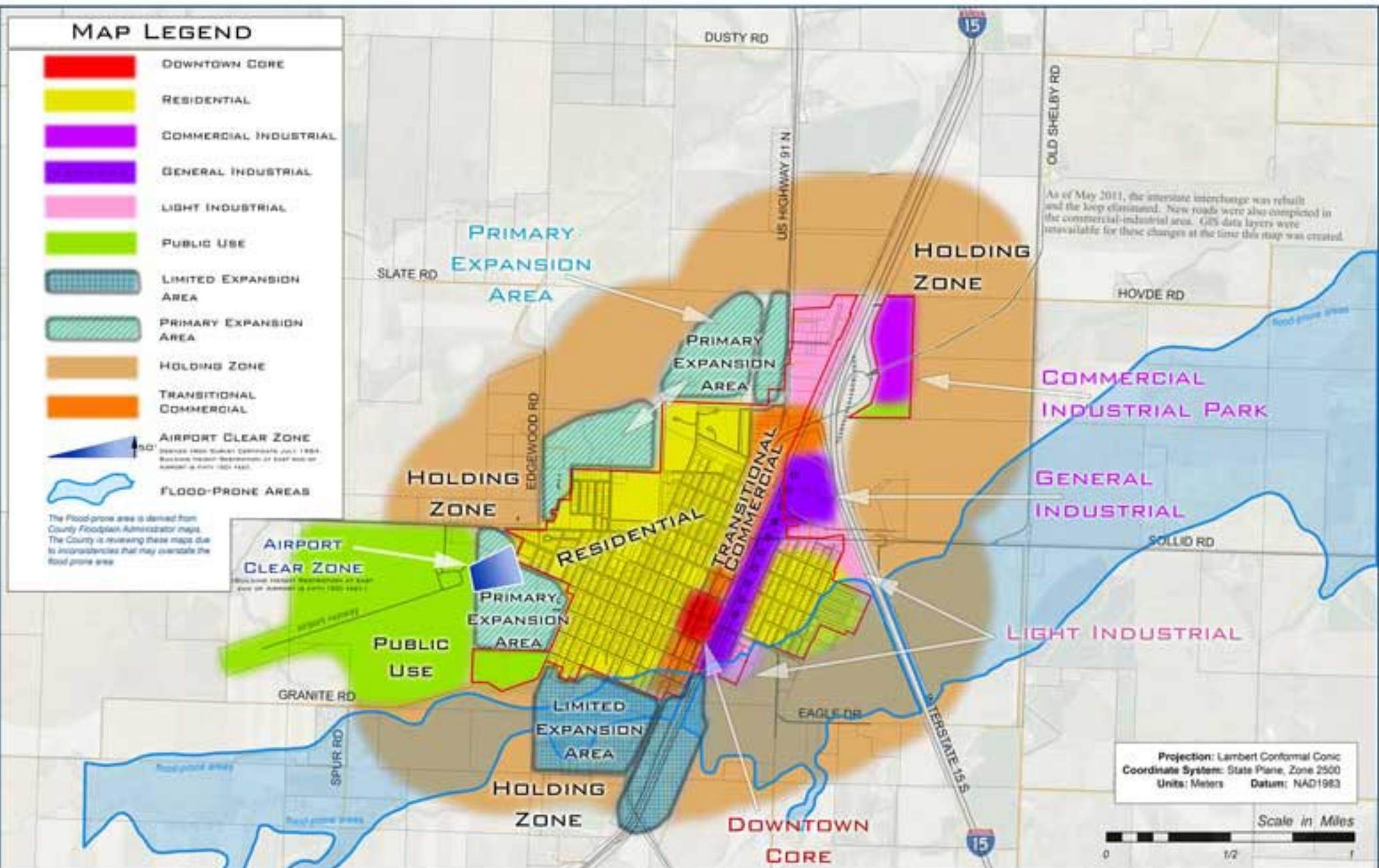
MAP LEGEND

- DOWNTOWN CORE
- RESIDENTIAL
- COMMERCIAL INDUSTRIAL
- GENERAL INDUSTRIAL
- LIGHT INDUSTRIAL
- PUBLIC USE
- LIMITED EXPANSION AREA
- PRIMARY EXPANSION AREA
- HOLDING ZONE
- TRANSITIONAL COMMERCIAL
- AIRPORT CLEAR ZONE
- FLOOD-PRONE AREAS

The Flood-prone area is derived from County Floodplain Administrator maps. The County is reviewing these maps due to inaccuracies that may overstate the flood-prone area.

AIRPORT CLEAR ZONE
Source: 1988 Statewide Comprehensive July 1984
 Bureau of Aeronautics Department of State and
 Aeronautics and Outer Space Administration

As of May 2011, the interstate interchange was rebuilt and the loop eliminated. New roads were also completed in the commercial-industrial area. GIS data layers were unavailable for these changes at the time this map was created.



Projection: Lambert Conformal Conic
 Coordinate System: State Plane, Zone 2500
 Units: Meters Datum: NAD1983



Conrad, Montana

The Land Use Plan section of the Growth Policy provides a general view of future land use for (Conrad/Valley) over the next 20 years. The Land Use Plan organizes all the expected future growth, development, and redevelopment into a pattern that is consistent with the (City's/Town's) Vision Statement and Goals. The plan represents how (Conrad/Valley) should develop over the next 20 years by showing the locations and characteristics of major land use types, such as downtown, commercial, residential, and so forth.

This map was prepared March 2011 by Global Positions, LLC. Future land use concepts developed by MMI Planning. Additional Spatial data (base maps) were obtained from the Montana Geographic Information Clearinghouse - (NRIS).

CITY OF CONRAD FUTURE LAND USE MAP COMPACT COMMUNITY ALTERNATIVE

Map 7

